

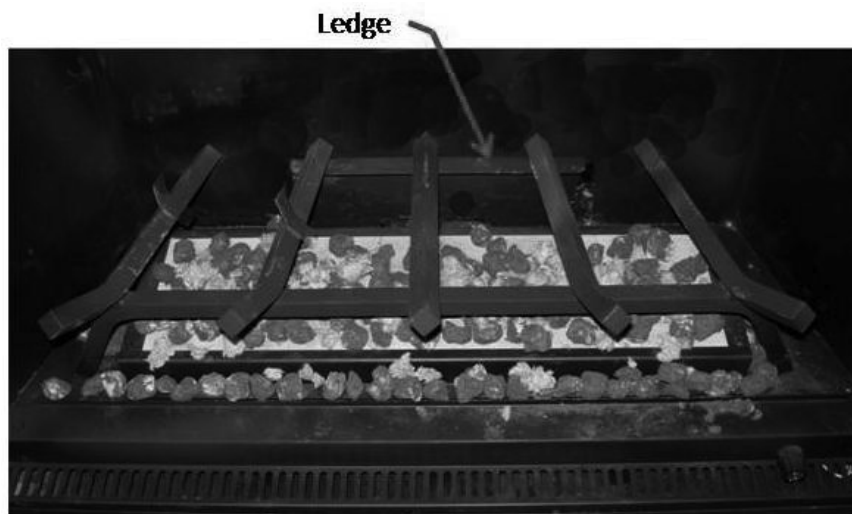
Figure 10

NOTE: Very small changes in air shutter position make major changes in the appearance of the flame.

- a. If the flame is too blue, push the air shutter **away from** you in small increments (about 1/16") until the appearance of the flame improves. Tighten the nut of the air shutter. Replace the front vent plate, and screw it to the firebox floor.
 - b. If the flame is too orange, or if sooting occurs, pull the air shutter **toward** you in small increments (about 1/16") until the appearance of the flame improves. Tighten the nut of the air shutter. Replace the front vent plate, and screw it to the firebox floor. **NOTE:** If sooting persists, turn off the appliance, and call your Mendota dealer.
19. Install the Faceplate / Surround, Screen, and other facings and trims according to the instructions included with them.

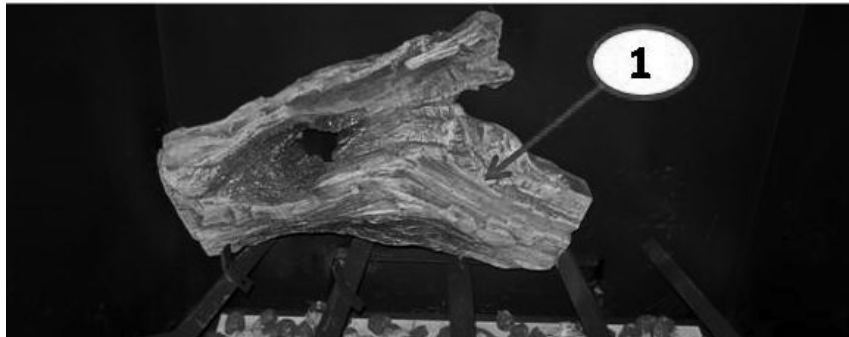
Figure 9

WARNING: Failure to position the logs in accordance with Fig.8 or failure to use only parts specifically approved with this appliance may result in property damage or personal injury.

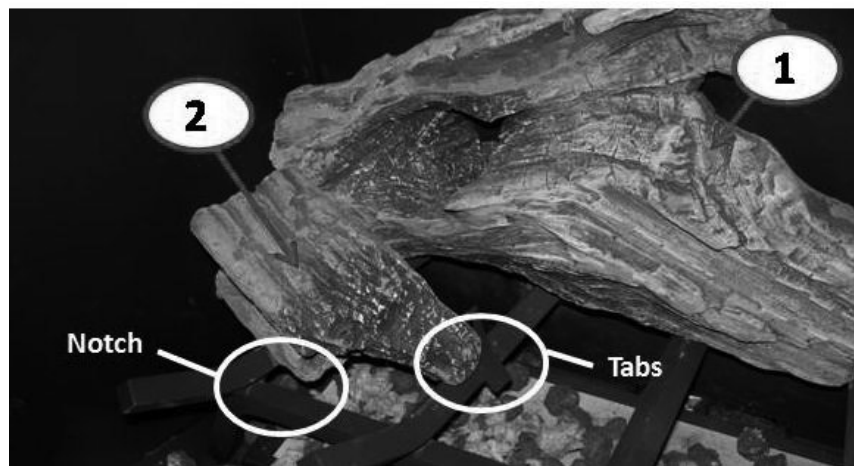


Place the grate above the burner and coals by resting the three center bars on the ledge located on the rear wall of the firebox. Center the grate left to right over the burner.

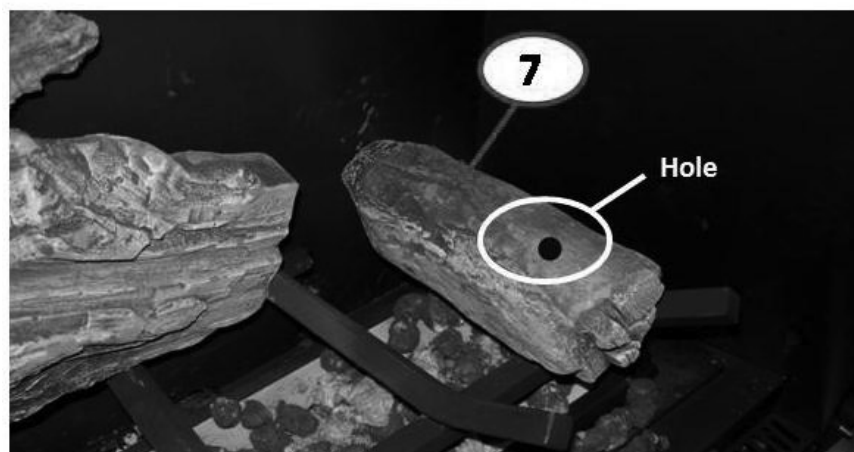
Figure 9 (continued)



Place rear log #1 on the grate with its left end against the left firebox wall (or against the optional firebrick panel, if used). The right end should rest on top of the grate bar, as shown. Make sure that the log is tight against the back of the firebox.

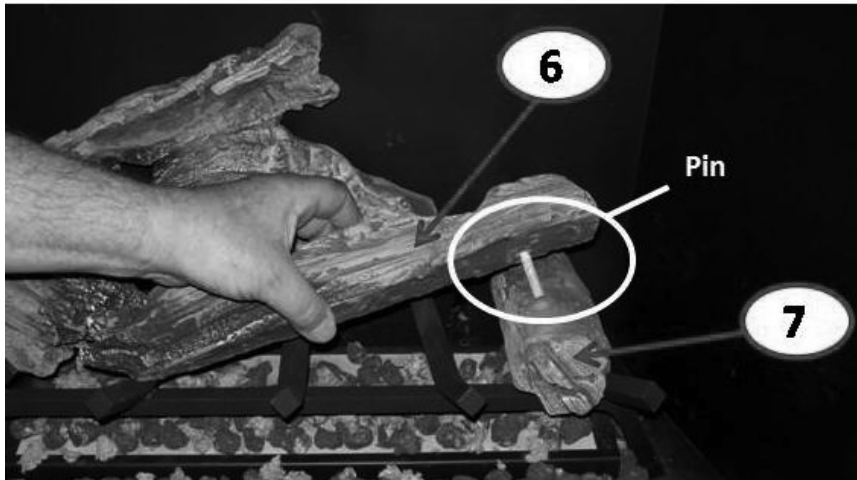


Place the notch on log # 2 over the left grate bar. Slide log # 2 back against the tabs that are located on the top of the grate bars.

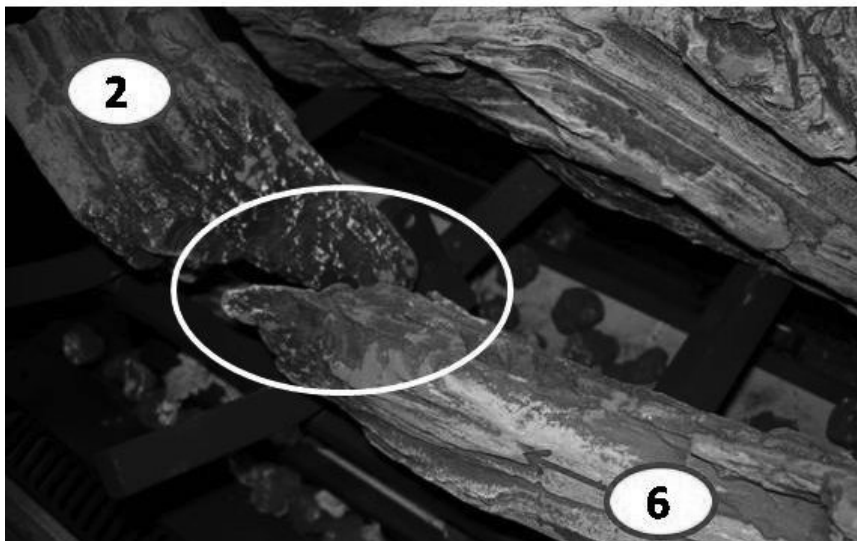


Place log # 7 against the right grate bar, with its front resting on the grate cross bar. Position the log so that the locating pin hole faces up.

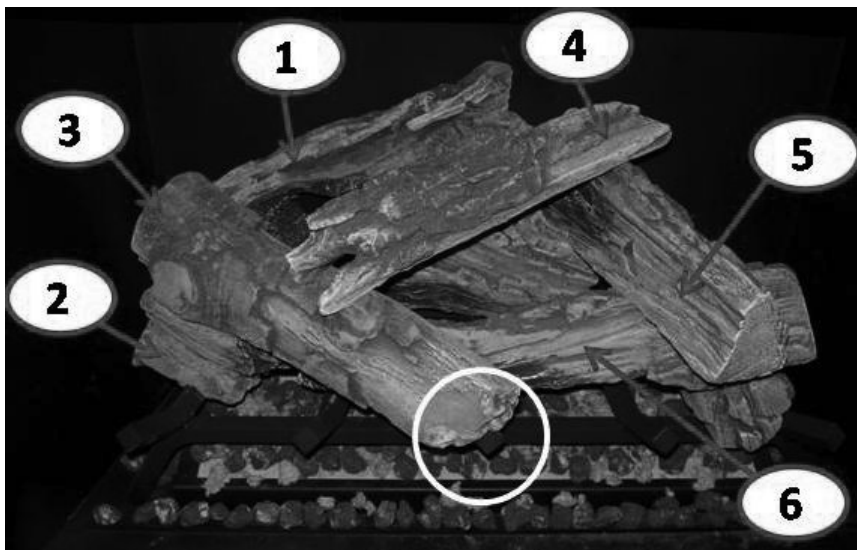
Figure 9 (continued)



Insert the pin of log # 6 into the locating hole of log # 7.



Position pinned log # 6 so that its left end is in contact with the right end of log # 2.



Log # 3 rests on log #2, with its right end against the grate bar, as shown in the circled area. Log # 5 rests in the notches on the tops of logs # 6 and # 1. Log # 4 lays across logs # 5 and # 3.